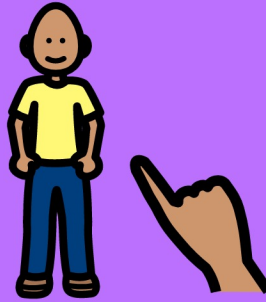


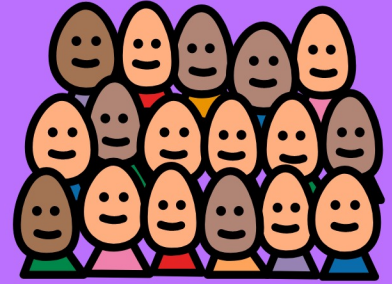
# February 14th (Monthly Verse) Page 1



Colossians 3:12



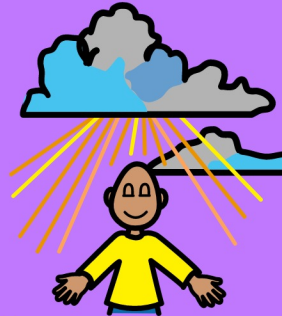
You are God's chosen



people. You are holy



and dearly loved.



So put on tender mercy



and kindness as if



they were your clothes.



Don't be proud.



Be gentle and patient.

# Elementary February 14th page 2



Ruth 1-4



There was a woman



named Ruth whose



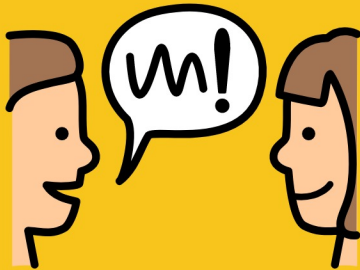
husband died, along with



his brother and father.



Ruth's mother-in-law,



Naomi, told her to go



home to her own family.



Ruth said, "where you go

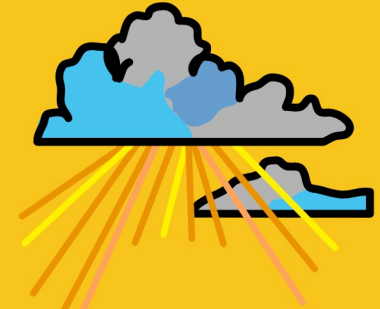
# Elementary February 14th page 3



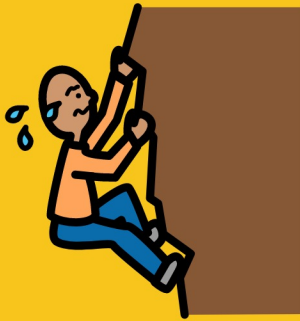
I will go, your people will



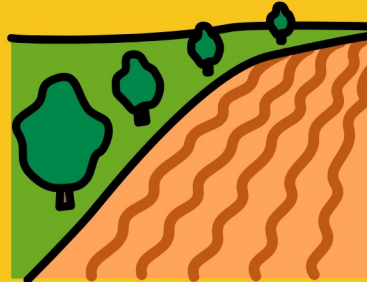
be my people and your



God will be my God."



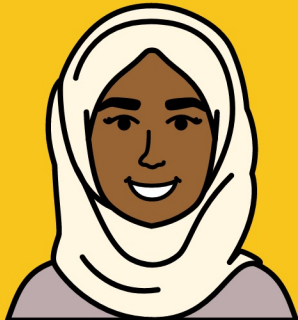
Ruth worked hard picking



grain in a field. The owner,



Boaz, was impressed with



her kindness and hard



work. Ruth married Boaz



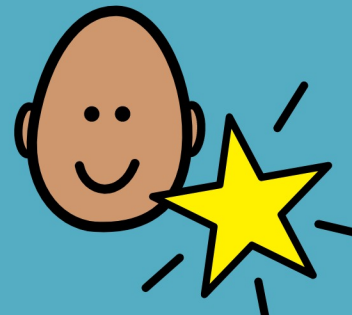
and they had a son!

# Elementary February 14th page 4

Life App  
(Kindness)



Showing others they



are valuable by how



you treat them.

Bottom Line



Be kind to



your family

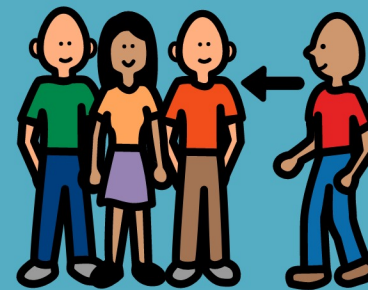


and friends.

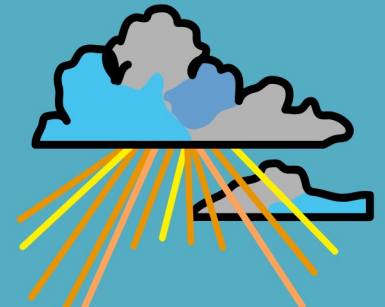
Basic Truth



I am loved by God



so I can belong in



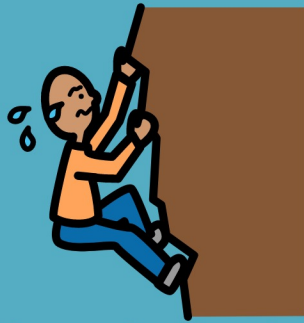
His family forever.



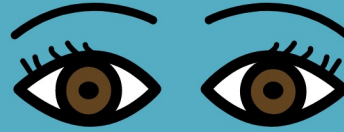
# Elementary February 14th page 5



Why is it sometimes



harder to be kind to



people we see all



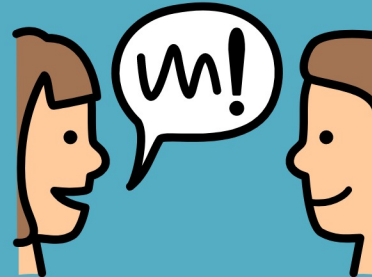
the time and easier



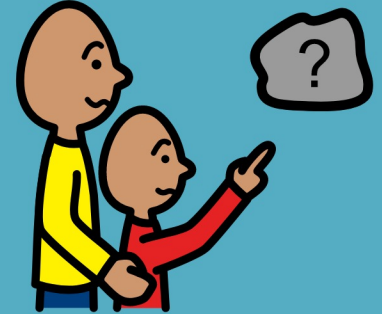
to be kind to



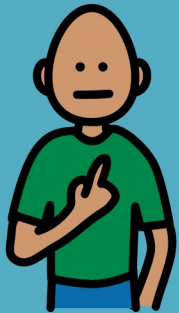
strangers or people



we just met?



What can we do to



help ourselves to



remember to show



kindness to our



family and friends?